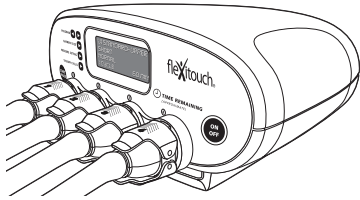


TREATMENT FOR THE UPPER EXTREMITY

The Flexitouch® system, a fully programmable segmented pneumatic compression device with calibrated gradient pressure, provides a variety of pneumatic compression therapy options to meet the lymphedema patient's needs. The only pneumatic compression device clinically proven to improve lymphatic function¹, the Flexitouch pressure profiles are easily tolerated and demonstrated to be effective^{2,3}, resulting in improved outcomes and treatment compliance.

UPPER EXTREMITY TREATMENT SOLUTION



Controller Unit (E0652)

The controller unit is a calibrated sequential pneumatic device generating compressed air which is delivered via hoses to multi-chamber garments. The controller unit is programmable to address the desired therapeutic objectives.

Arm Garment (E0668)

The garment consists of an inner layer of polyurethane cells enclosed in a soft stretchable nylon outer layer and is adjustable using hook and loop closures for a contoured fit. The garment consists of up to 16 chambers which are each 1-1/2 inches wide.

Optional accessories are available to meet specific patient needs. Accessories, which may include a chest accessory, trunk accessory, waist extender or closure strap, are included at no extra charge.

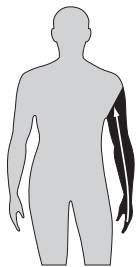
Product Specifications

FDA Status:	Cleared to market (Class II in July 2002)	
Controller Unit:	Weight	8 pounds
	Dimensions	10.4" x 9.8" x 4.7"
Garment Fabric:	100% nylon (latex free)	

TREATMENT PROGRAM OPTIONS

The Flexitouch's programmability allows the clinician to choose from a number of treatment configurations. Flexibility in programming means the Flexitouch can provide traditional pneumatic therapy, with the added benefit of specific programs to address problem areas.

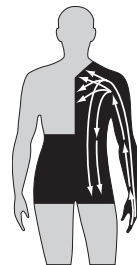
Primary Programs



Full Arm

Program U7
30 Minutes

Distal to proximal drainage with full arm garment.



Full Arm and Core

Program U1
60 Minutes

Distal to proximal drainage preceded by proximal clearing with full arm garment and chest and trunk accessories.

Supplemental Programs



Trunk and Chest

Program U3
24 Minutes



Trunk

Program U2
12 Minutes



Bicep, Forearm and Hand

Program U4
36 Minutes



Forearm and Hand

Program U5
24 Minutes



Hand Only

Program U6
12 Minutes

1. Kristen E. Adams, John C. Rasmussen, Chinmay Darne, I-Chih Tan, Melissa B. Aldrich, Milton V. Marshall, Caroline E. Fife, Erik A. Maus, Latisha A. Smith, Renie Guillod, Sunday Hoy, and Eva M. Sevick-Muraca. *Biomedical Optics Express*. 2010; Vol. 1(1): 114-125 2. Caroline E. Fife, MD, Suzanne Davey, OTR/L CLT-LANA, Erik Maus, MD, Renie Guillod, MD, and Harvey N. Mayrovitz, PhD. *Supportive Care in Cancer*. 2012; Vol. 20(12): 3279-3286 3. Satish C. Muluk, MD, Alan T. Hirsch, MD, and Elise C. Taffe, MD. *European Journal of Vascular and Endovascular Surgery*. 2013; Vol. 46(4): 480-487